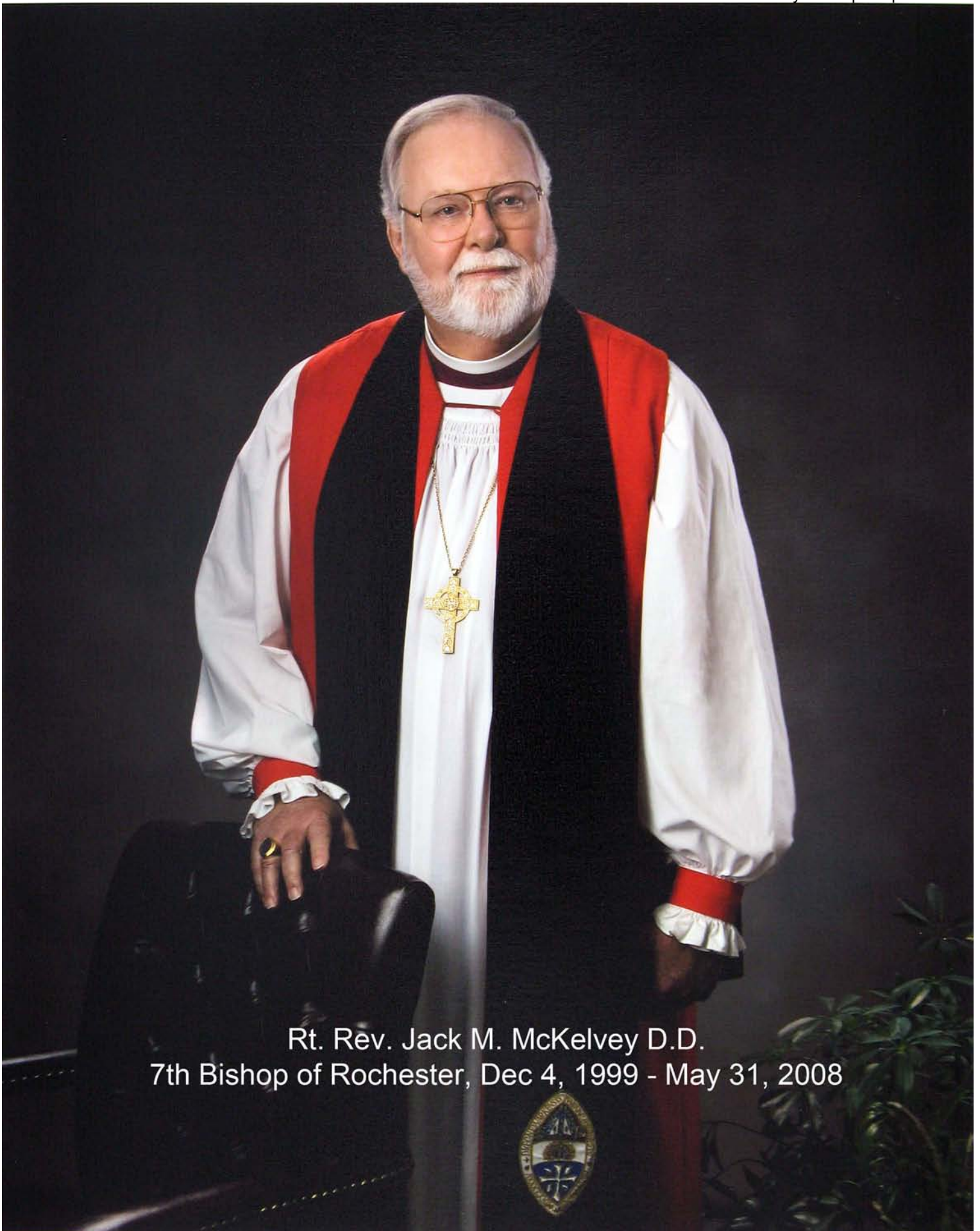




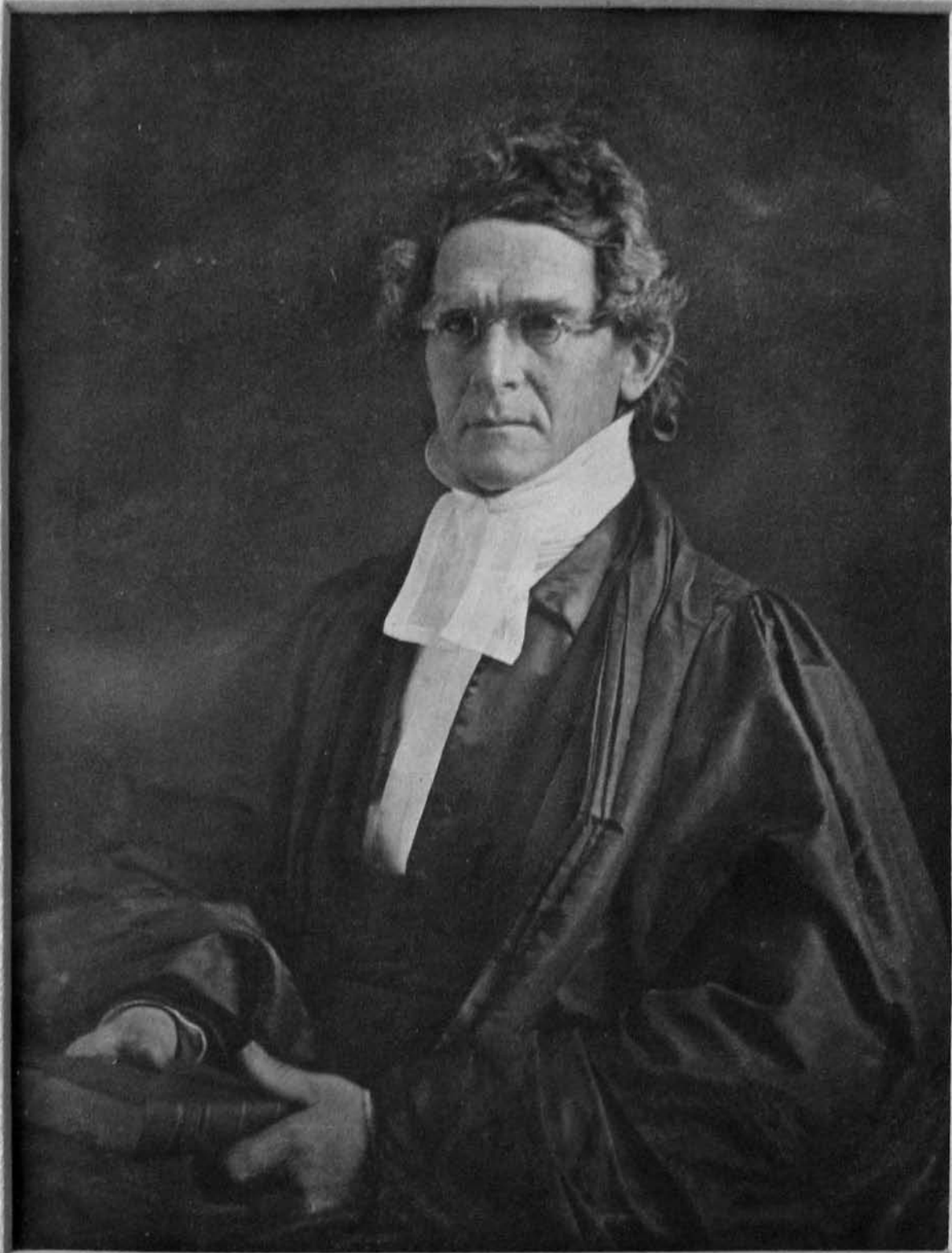
Rev. Michael W. Hopkins
October 1, 2004 -



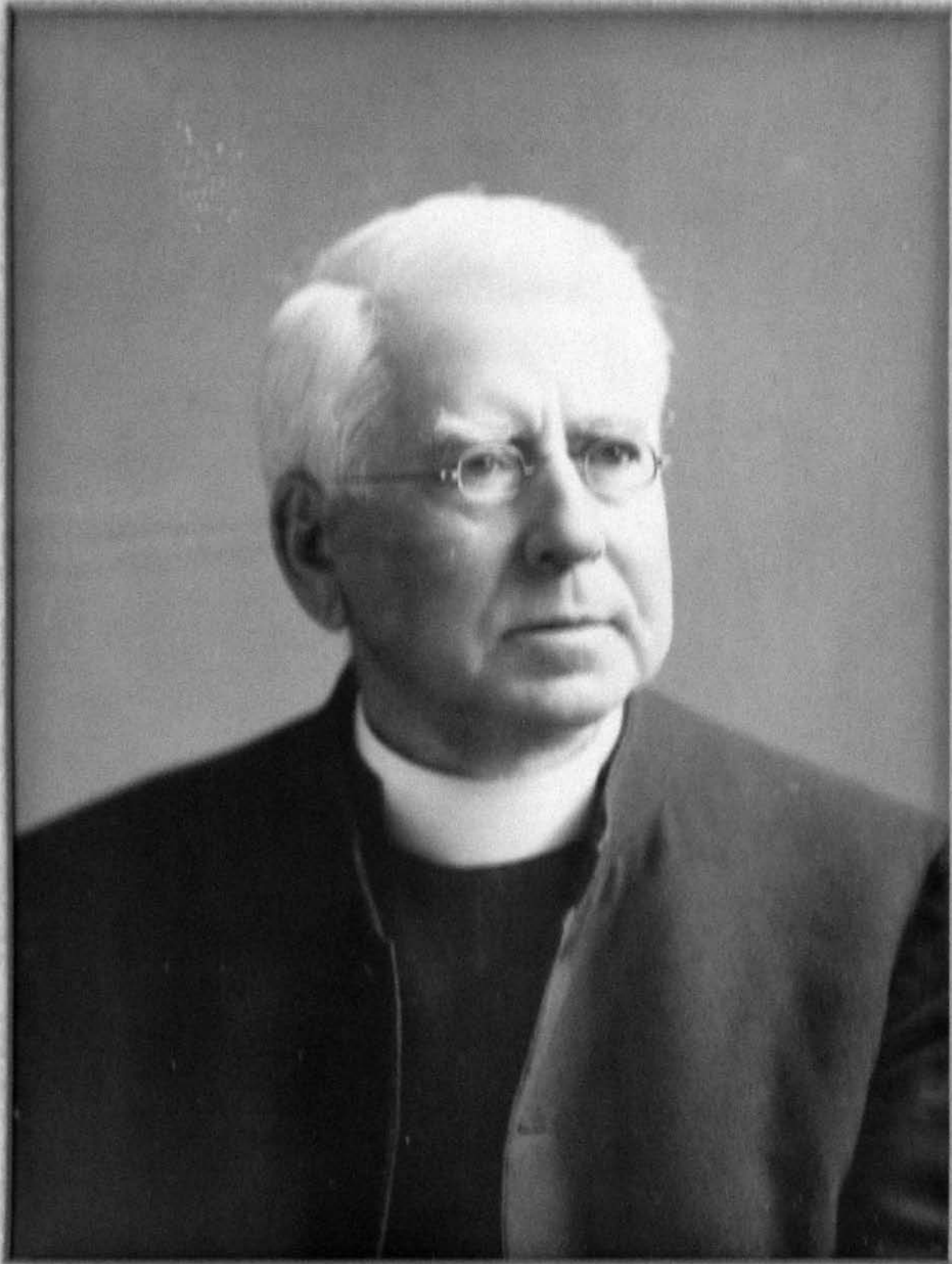
Rt. Rev. Jack M. McKelvey D.D.
7th Bishop of Rochester, Dec 4, 1999 - May 31, 2008



Rev. Henry John Whitehouse D. D. LL D.
2nd Rector of St Luke's Church 1830-1844
Bishop of Illinois 1850-1874



Rev. Francis H. Cuming D.D.
Dec 1820 - April 1829



Rev. Benjamin Watson D.D.
April 1855 - Aug 1859

ST. LUKE'S CHURCH.

PULPIT.

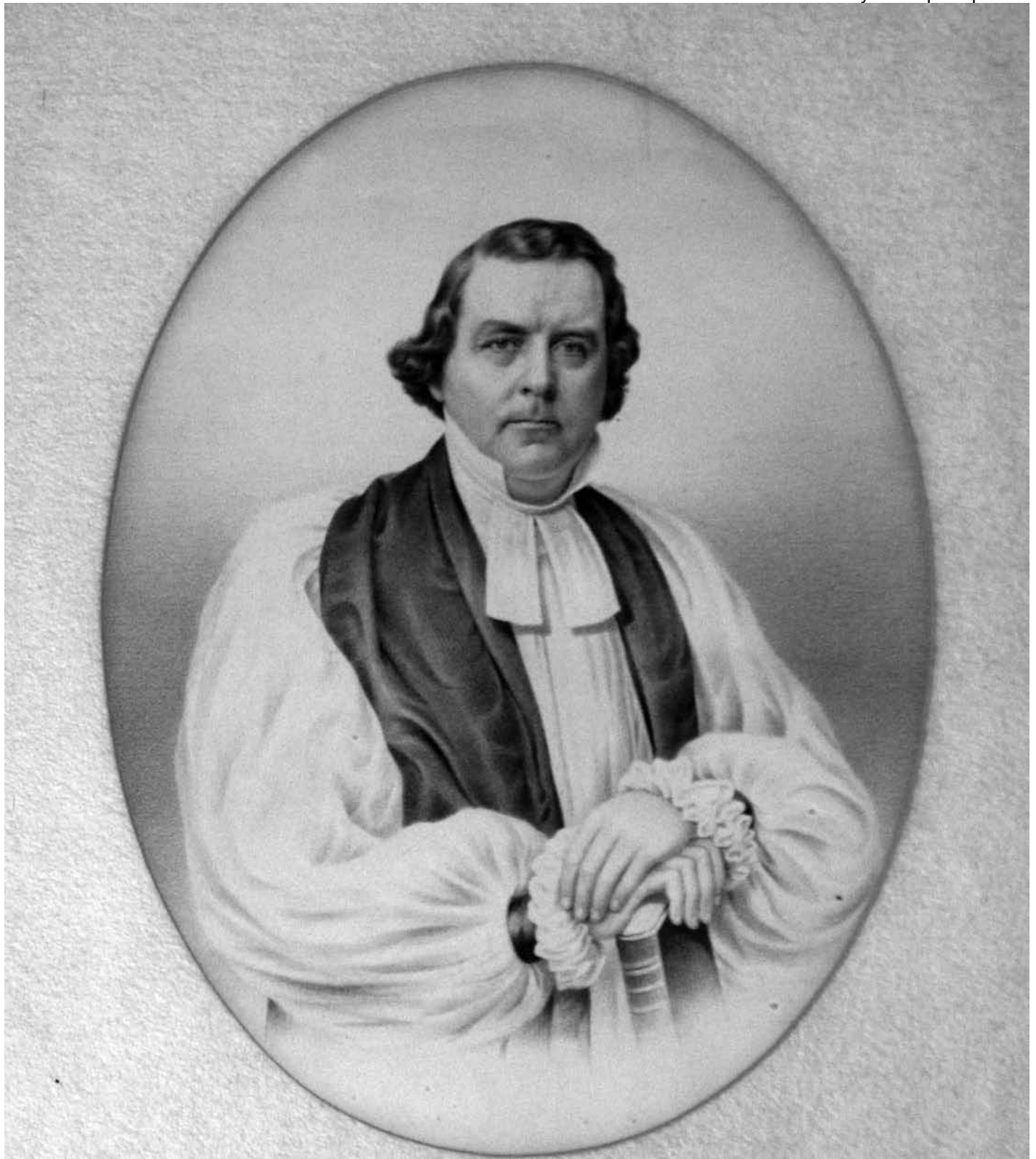
Reserved for old Persons.			260 H. Montgomery. 106.	PULPIT.		105	260						
4	5	6	240 Erasmus D. Smith, 1	107	260 V. Matthews. 53	104	240 John Caldwell.				55	56	57
			240 Seh C. Jones. 2	52	260 Miss Rochester. 53	103	240 J. B. Elwood.						
			260 Joseph Christopher. 3	51	260 T. H. Rochester. 54	102	260 Rector.						
			260 Henry Scrantom, i. 4	50	260 William Kidd. 54	101	260 Ebenezzer Watts.				R. Keeler		
			260 R. Lockwood. 5	49	260 S. O. Smith. 55	100	260 William McKnight.				N. T. Rochester		
E. Whalen.			260 J. T. Talman. 6	48	260 Mrs. Saxton. 56	99	260 J. King i. J. Alexander i						
			260 Jonathan Child. 7	47	260 M. Mead. 57	98	260 J. B. Van Every, i.						
			260 H. E. Rochester and others. 8	46	260 William Kidd. 58	97	260 J. R. Bishop, j				58	59	
11	12	13	260 Joseph Strong. 9	45	260 William Brewster. 59	96	260						
			260 S. H. Packard. 10	44	260 Hawks. 60	95	260 Darius Perrin.						
			240 Hiram Wright. 11	43	260 J. Haywood, W. Haywood.	94	240 A. Weston, j						
17	18	19	240 M. F. Delano. 12	42	260 W. E. Lathrop. 61	93	240				43	44	
			240 E. Darwin Smith. 13	41	260 J. M. Winslow, i. Mrs. Child, j	92	240 J. S. Walker.						
23	24	25	240 E. Darwin Smith. 14	40	240 A. Wentworth, j.	91	220 L. B. Langworthy.						
			220	39	240 H. Cady. 62	90	220						
29	30	31	220	38	240 David Hoyt. 63	89	220				53	54	
			200	37	240 Clapp. 64	88	200						
35	36	37	200	36	240	87	200				55	56	
			200	35	240	86	140 F. Whittlesey.						
			200	34	240	85	120						
			200	33	240	84	100				31	32	
			200	32	240	83	100						
			200	31	240	82	70						
			200	30	240	81	60 Free.						
			200	29	240	80	50 Free.						
			200	28	240	79	50 Free.						
			200	27	240	78	50 Free.						
			200	26	240	77	50 Free.						
			200	25	240	76	50 Free.						
			200	24	240	75	50 Free.						
			200	23	240	74	50 Free.						
			200	22	240	73	50 Free.						
			200	21	240	72	50 Free.						
			200	20	240	71	50 Free.						
			200	19	240	70	50 Free.						
			200	18	240	69	50 Free.						
			200	17	240	68	50 Free.						
			200	16	240	67	50 Free.						
			200	15	240	66	50 Free.						
			200	14	240	65	50 Free.						
			200	13	240	64	50 Free.						
			200	12	240	63	50 Free.						
			200	11	240	62	50 Free.						
			200	10	240	61	50 Free.						
			200	9	240	60	50 Free.						
			200	8	240	59	50 Free.						
			200	7	240	58	50 Free.						
			200	6	240	57	50 Free.						
			200	5	240	56	50 Free.						
			200	4	240	55	50 Free.						
			200	3	240	54	50 Free.						
			200	2	240	53	50 Free.						
			200	1	240	52	50 Free.						
			200	0	240	51	50 Free.						

aisle.

SOUTH AISLE.

NORTH AISLE.

aisle.



Right Rev. Henry W. Lee D.D.L.L.D.
Jan 1848 - Jan 1865



Right Rev. Henry J. Whitehouse D.D.L.L.D.
Dec 1829 - May 1844



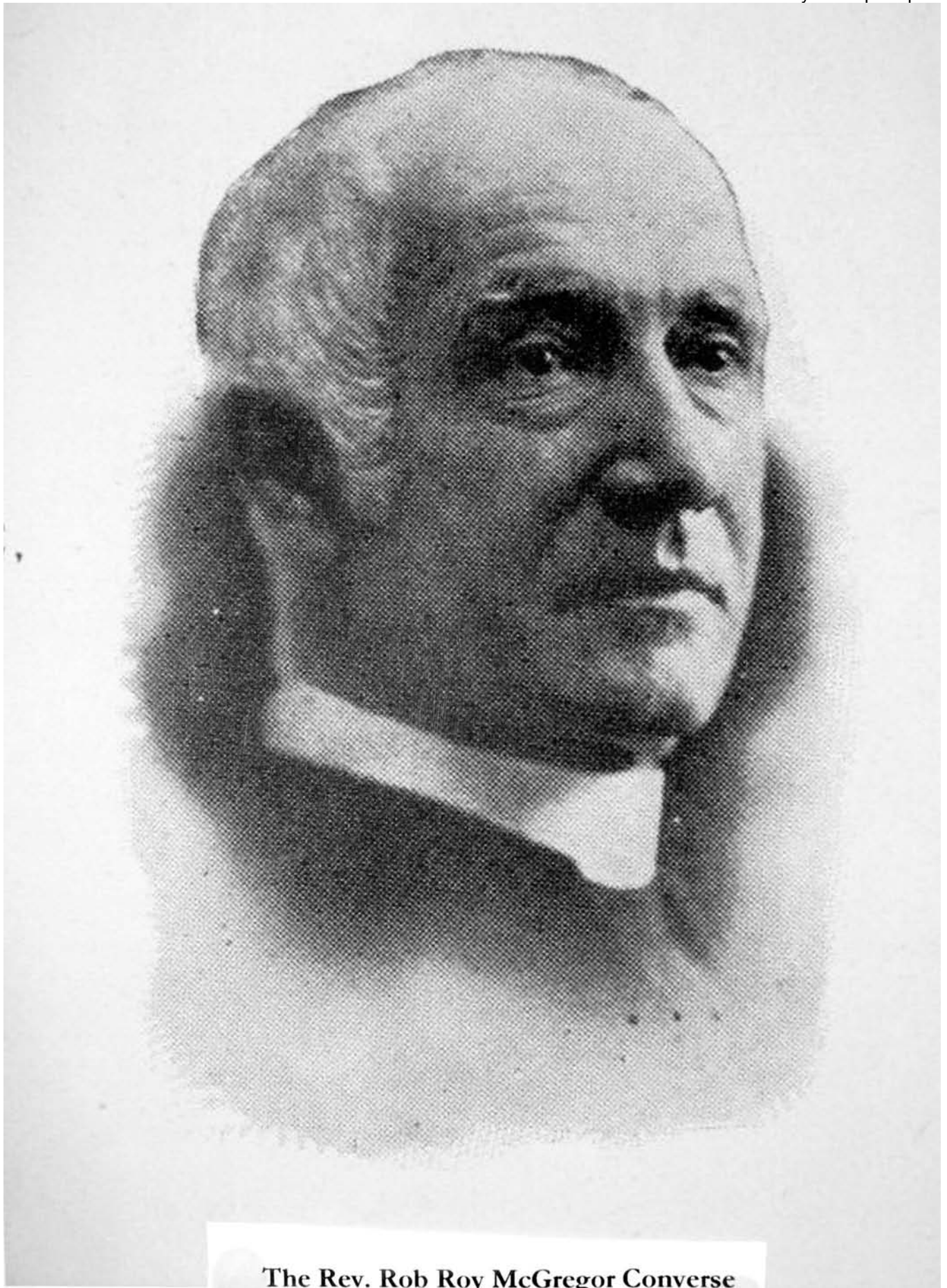
Rev. Thomas C. Pitkin D. D.
July 1844 - July 1847



Rev. R. Bethel Claxton D. D.
Dec 1859 - Sept 1865



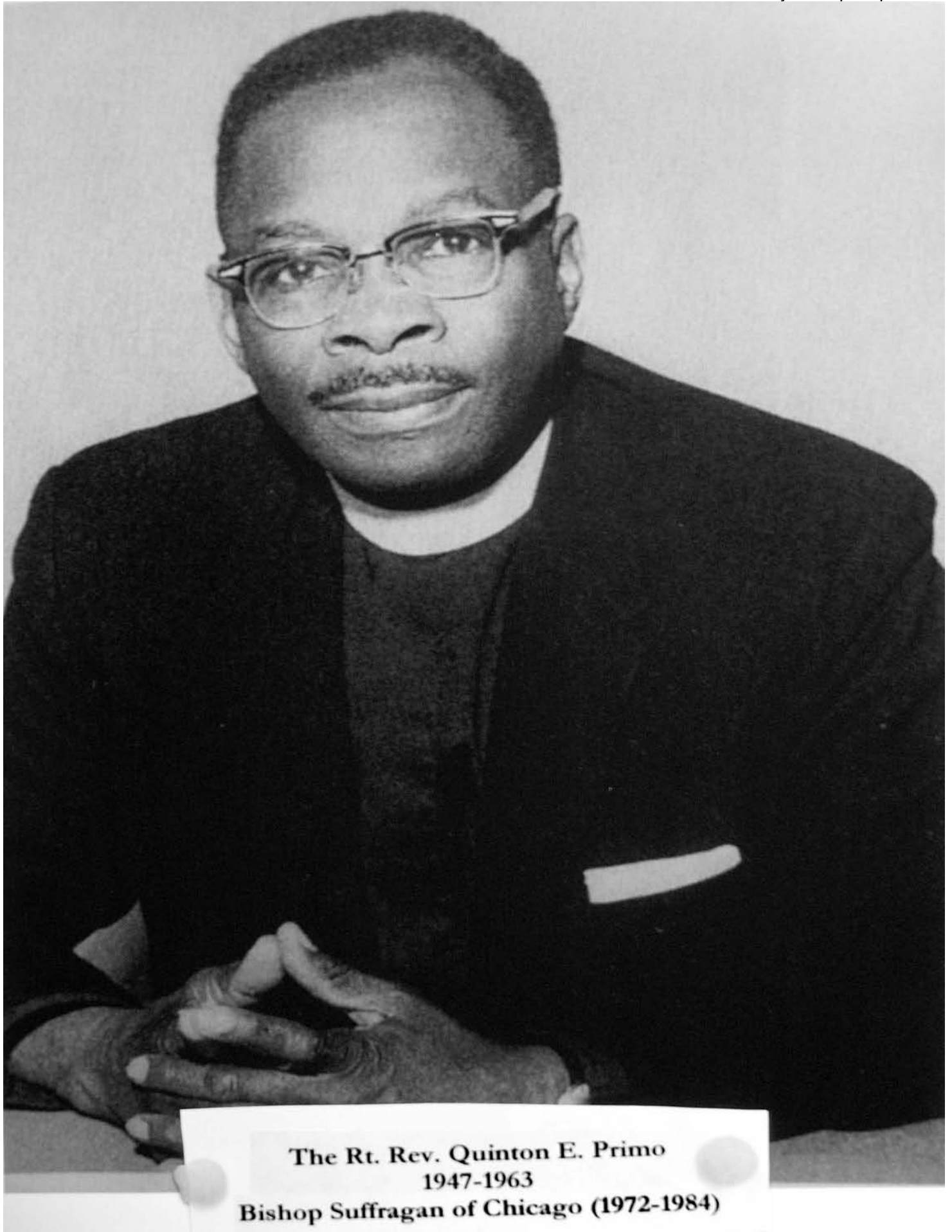
Rev. Henry Anstice D. D.
1866 - 1897



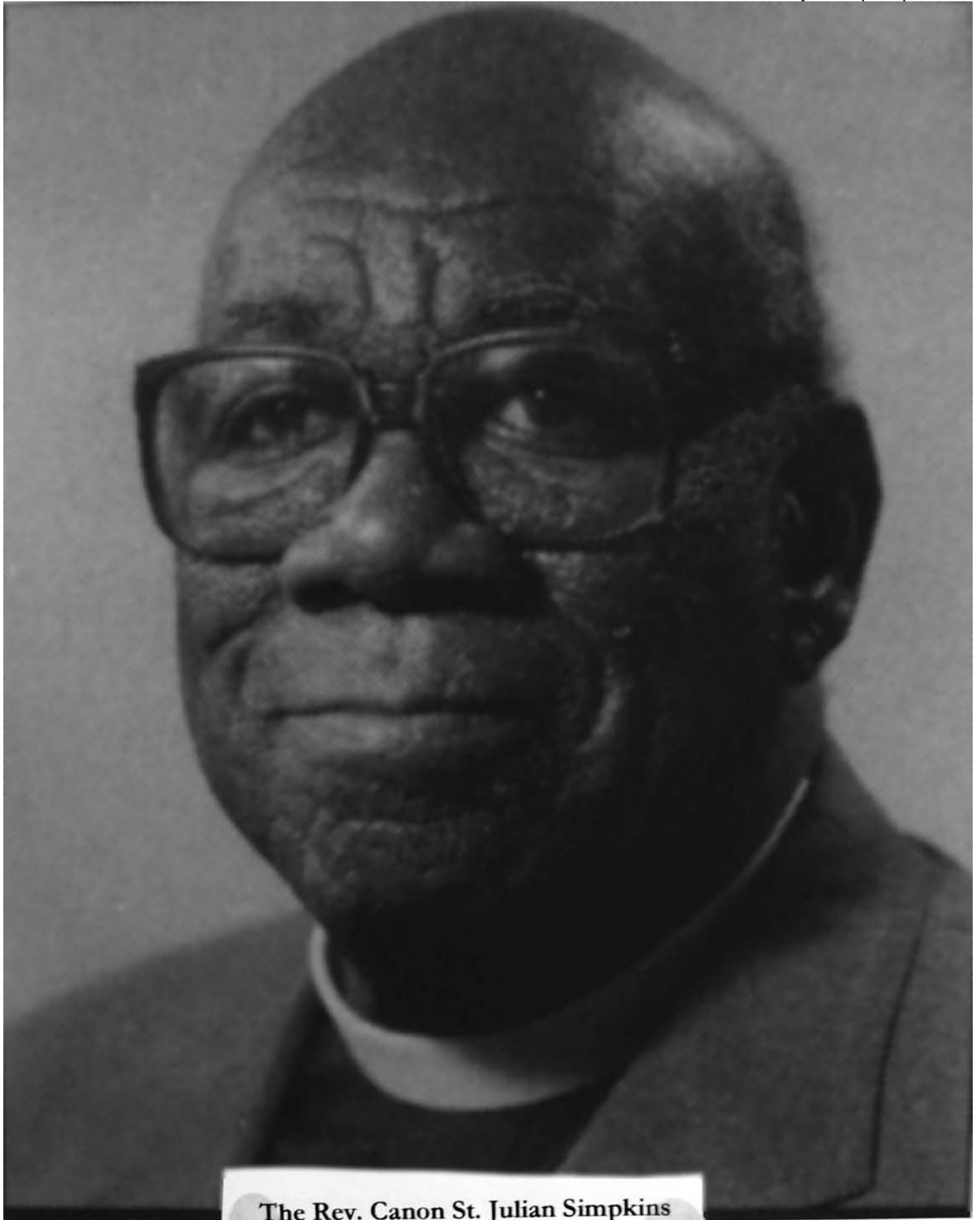
The Rev. Rob Roy McGregor Converse
1897-1915



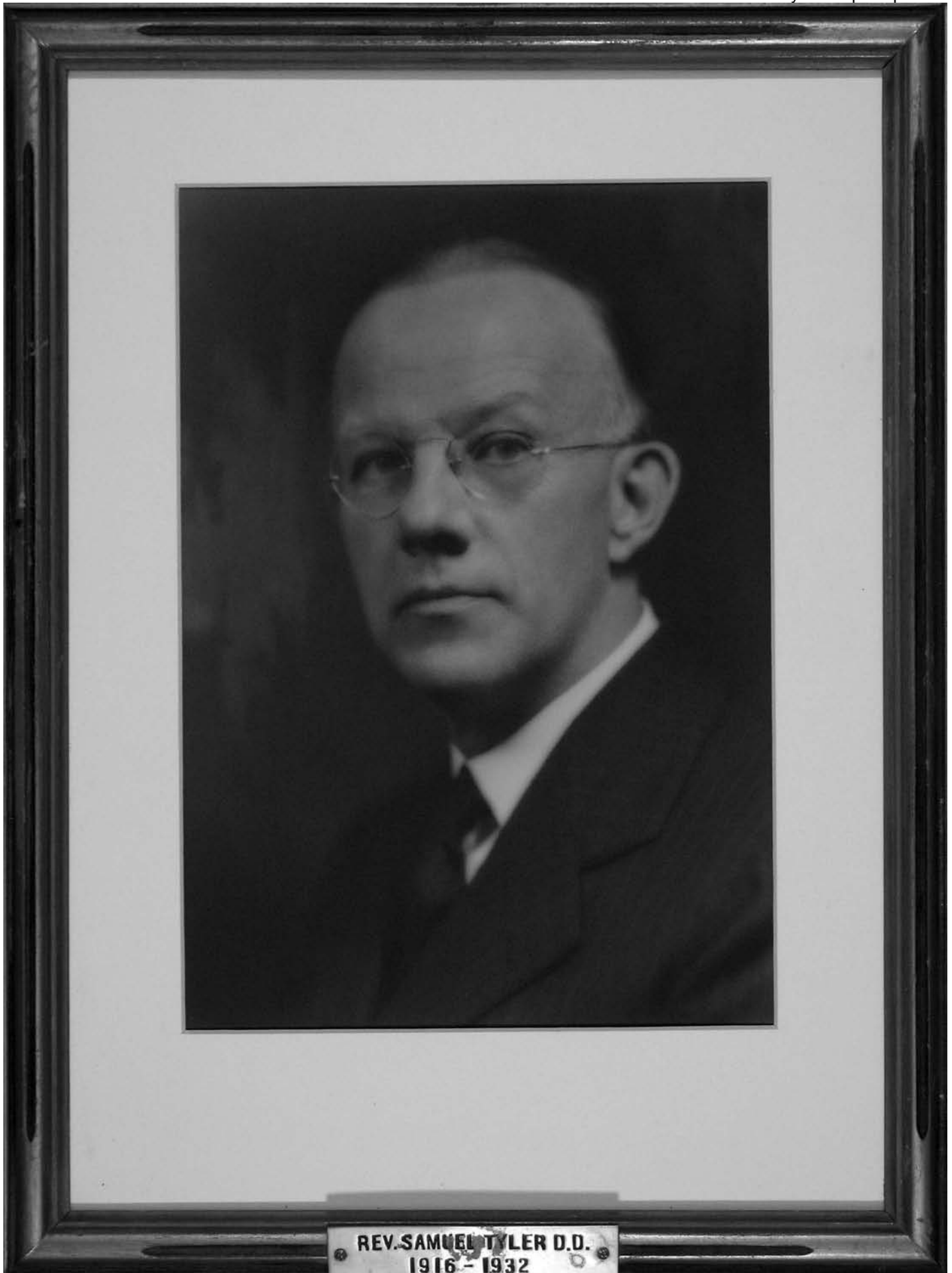
The Rev. Frederick M. Winnie
1933-1972



The Rt. Rev. Quinton E. Primo
1947-1963
Bishop Suffragan of Chicago (1972-1984)



The Rev. Canon St. Julian Simpkins
1963-1983

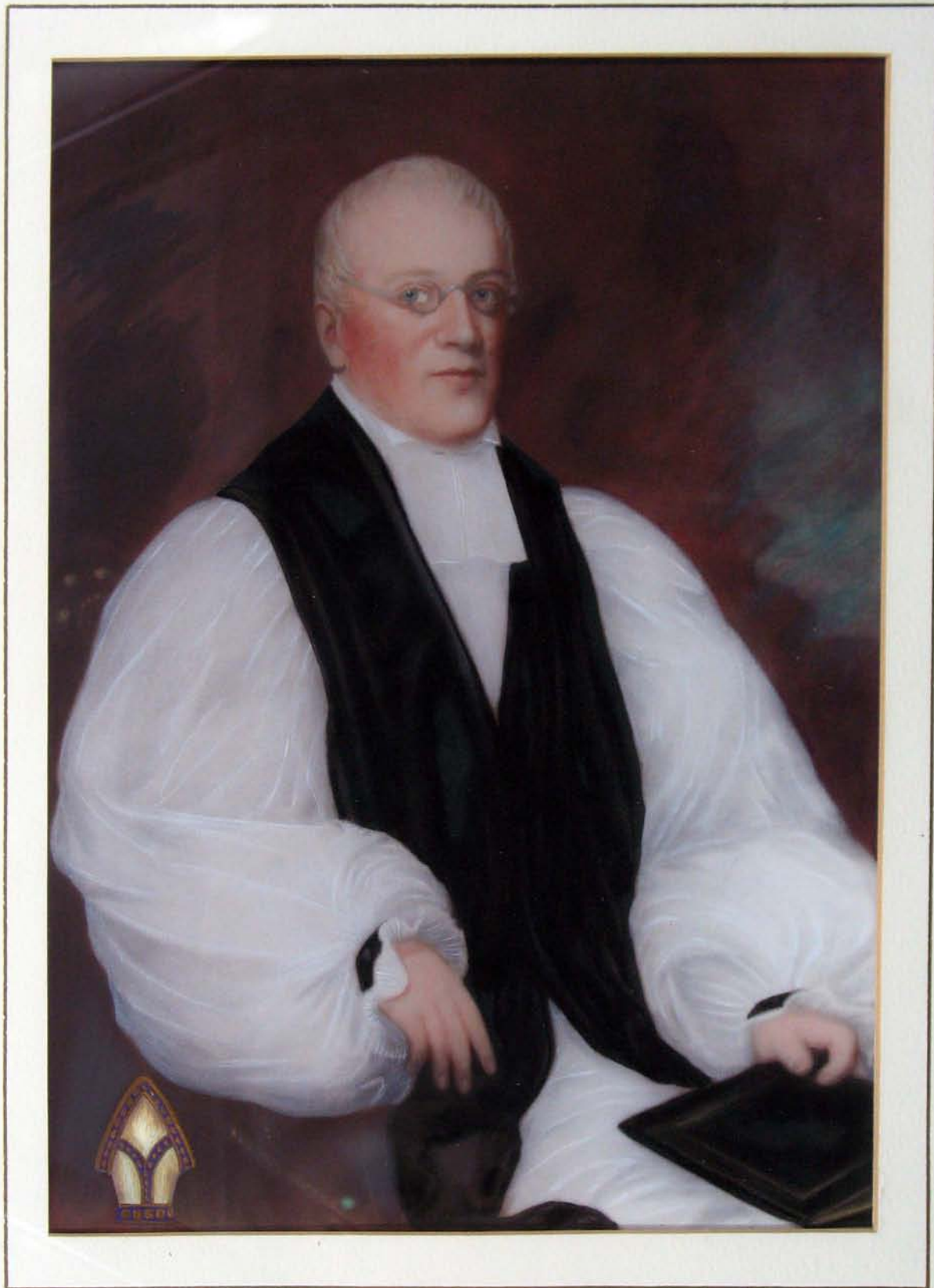




The Rev. Frank L. Brown
1927 - 1945

**Frank Louis Brown, rector of St. Philip's
Mission, after 1929**

*Courtesy The Church of St. Luke and St. Simon Cyrene,
Rochester, New York*



John Henry Hobart
1775 - 1830

BISHOP JOHN HENRY HOBART

1775-1830

Presented by:

Genesee Valley Regional Branch of the Church Union

Officers:

General Co-Chairmen: Suzanne Meyn
Ivan Newman

Secretary: Marjorie Nichols

Treasurer: Nelson Morrow

News Editor John Shoemaker *

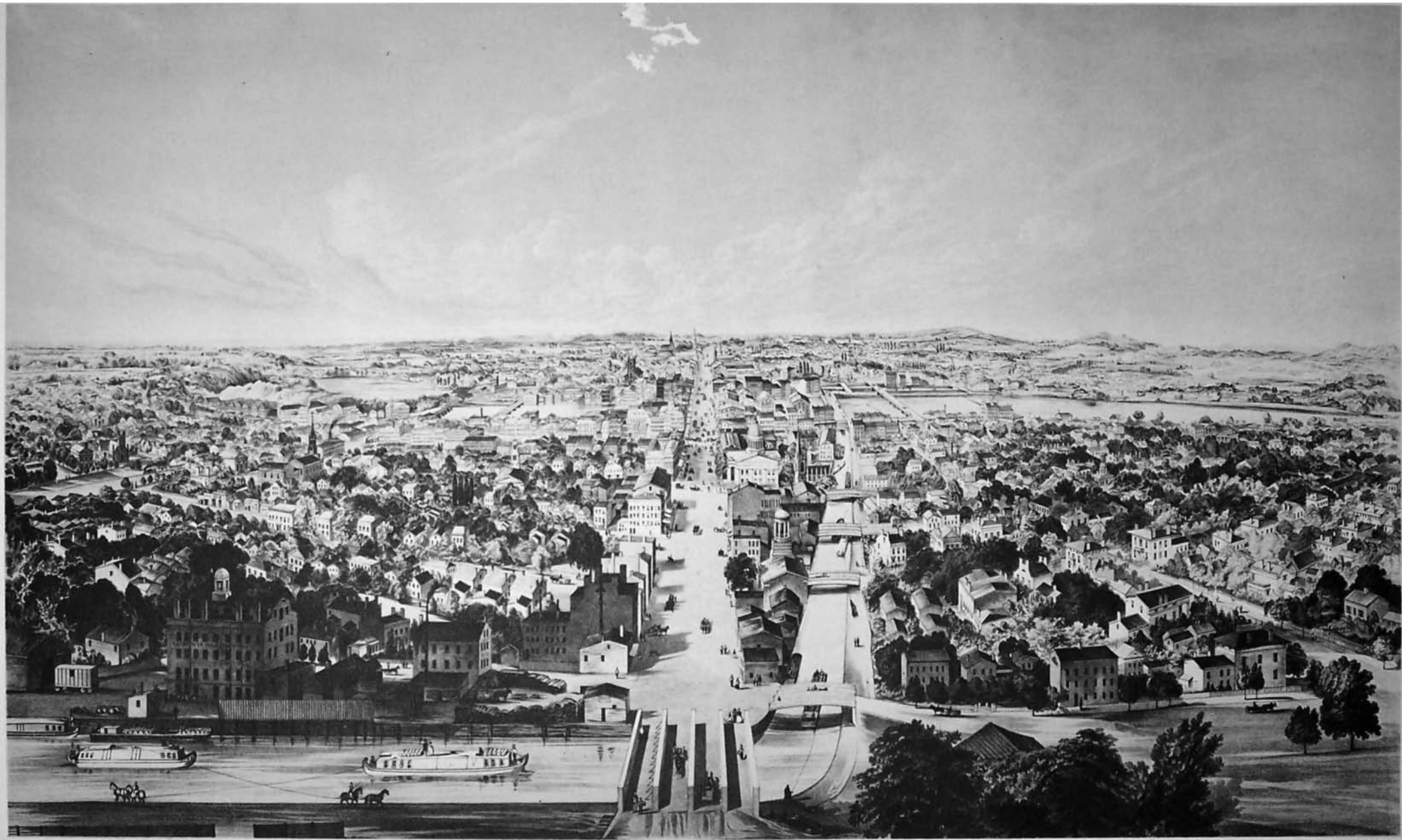
Rochester Chairman: Beatrice Cone

* His personal gift in the name of the Church Union

This is a photograph of an original painting. It has been hand colored by an expert in the field. The Miter in the lower left hand corner was photographed from his tombstone and placed in the picture by an artist.

Received December 1, 1966





Published by Smith Bros. & Co. 223 Fulton St. N.Y.

ROCHESTER.

FROM THE WEST, 1866



