

Church/Organization: Riverside Cemetery
2650 Lake Avenue
Rochester, NY 14612

Years of Operation 1892– present

Volume Title:GYWjcbg'H!%5ž6 / '7/'GYWjcb'9!, 'G]b[`Y'; fUj Yg

Film/Scan Location: Riverside Cemetery
2650 Lake Avenue
Rochester, NY 14612

(585) 428-7775
<http://www.cityofrochester.gov/Riverside/>

Dates Imaged: June 2013 – September 2013

Number of pages: 18

Notes: Riverside and Mount Hope Cemetery indexes, searchable by name, can be found on the University of Rochester website at <http://rbscp.lib.rochester.edu/mthope/search>. We recommend you use this tool to facilitate your search.

Except for blank pages that were not photographed or scanned, the images represent Riverside Cemetery records as they appear in their original form and order. Note: not all records follow logical, chronological or alphabetical order.

Plot Records for Block Section T includes plot #, name of plot owners, and map of burials in the plot with the names of those buried.

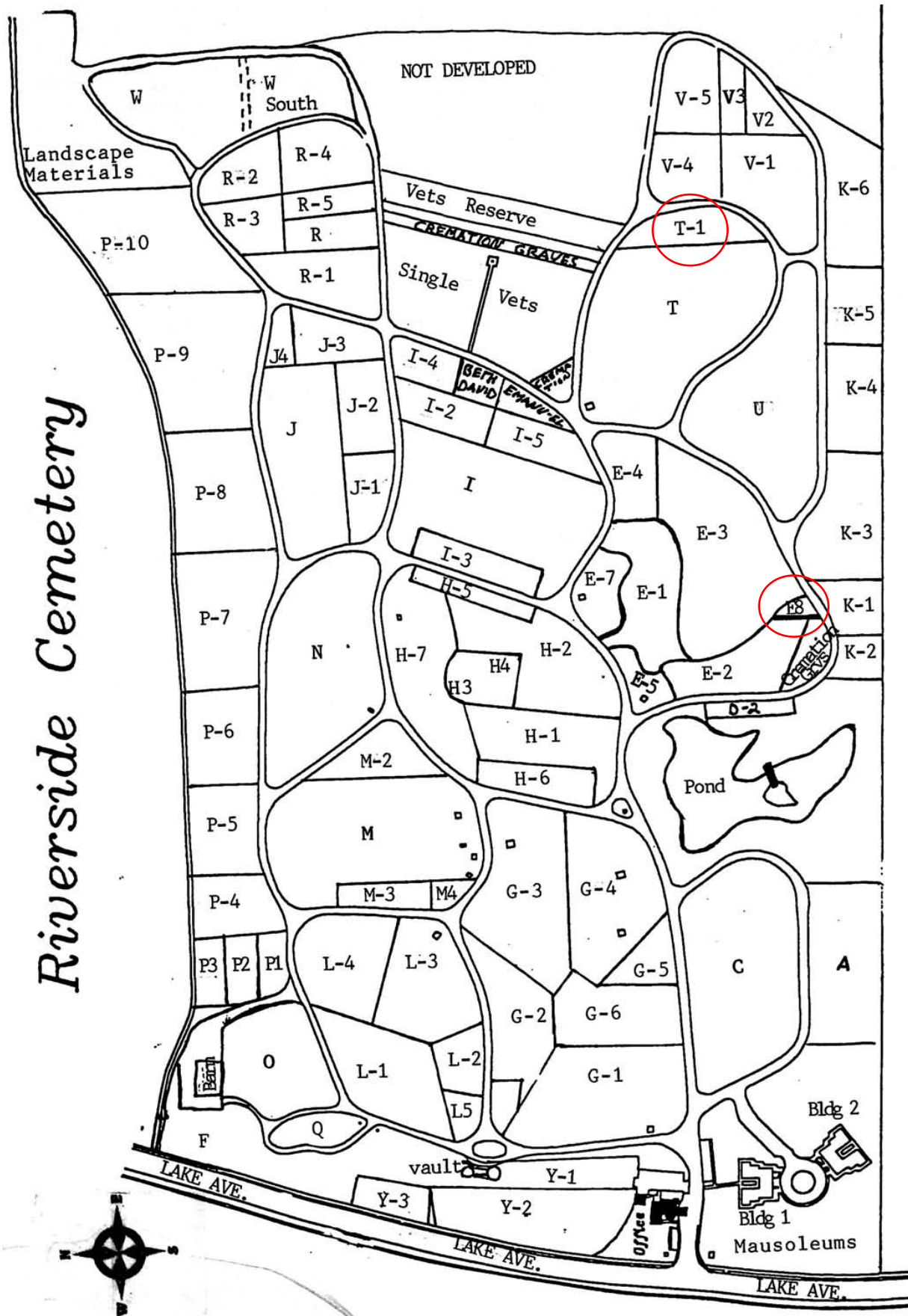
Digitally photographed or scanned from original documents by:

**The Rochester Genealogical Society, Inc.
Church Records Preservation Committee**

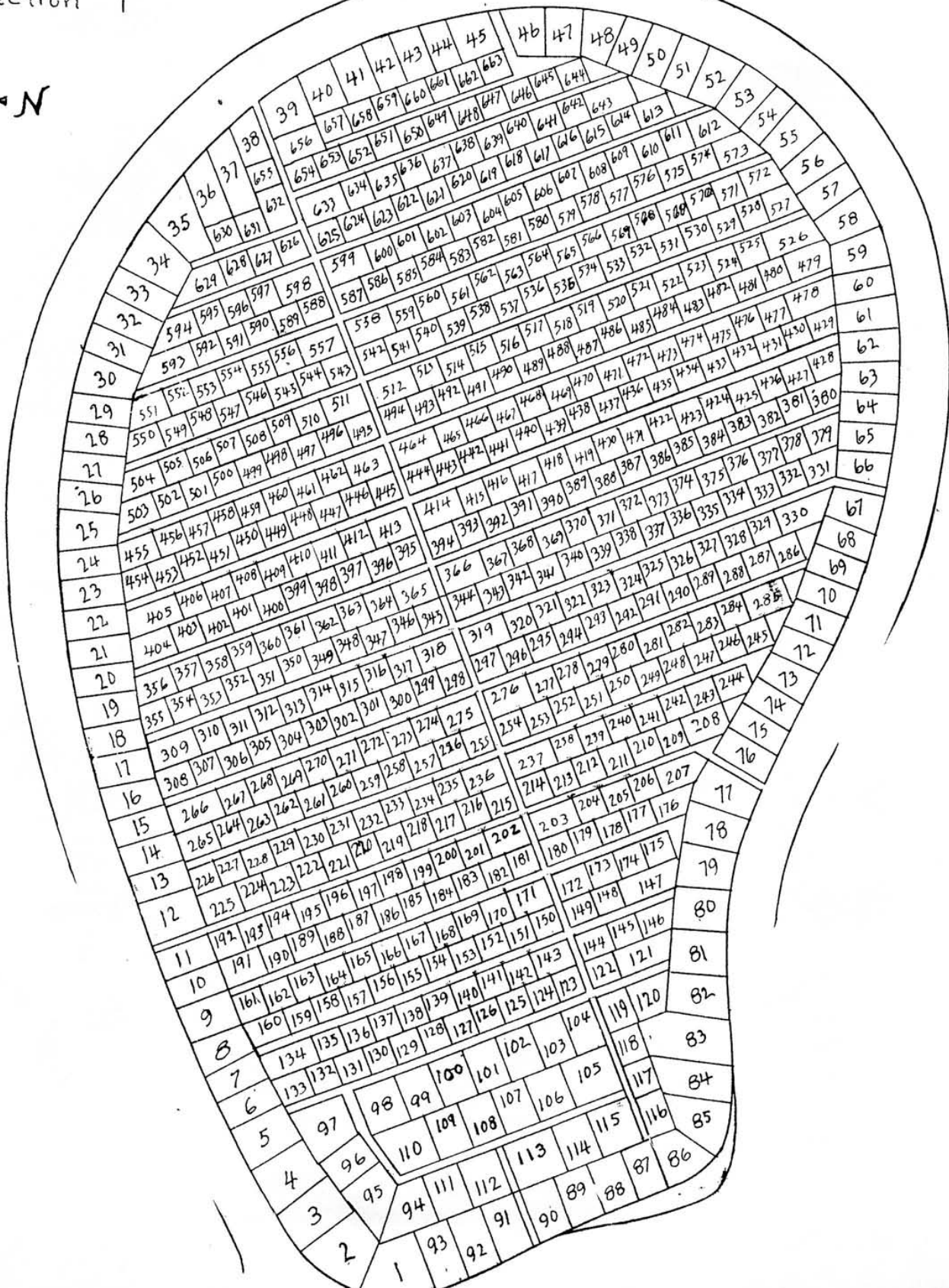
Bob Coomber
Russ Green
Eila Harkonen-Hart
Jim Hendrickson

Roscoe Hastings
Kathryn Heintz
Linda Koehler
Larry Lavery

Larry Naukam
Sharon Perkins



Section T

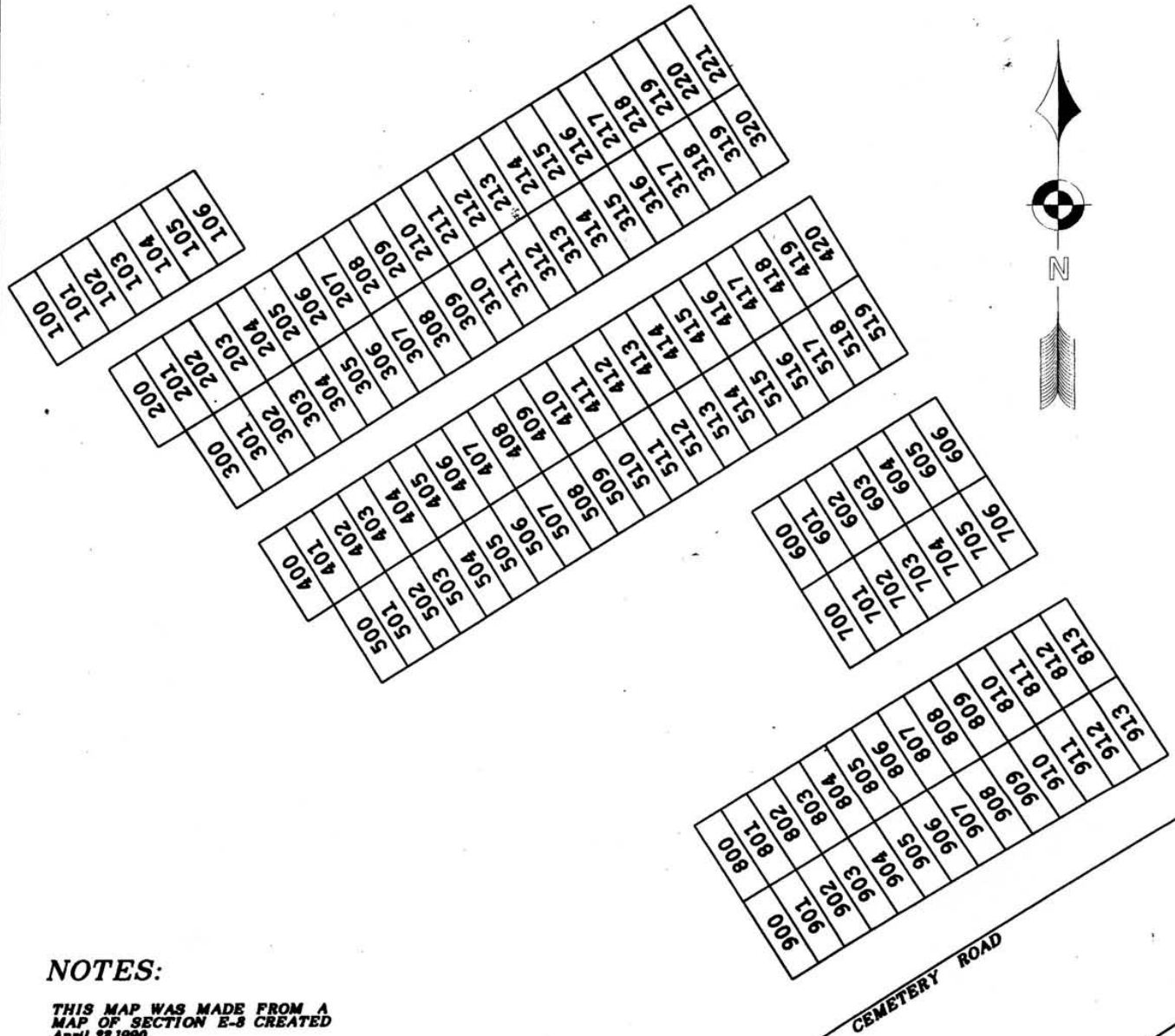
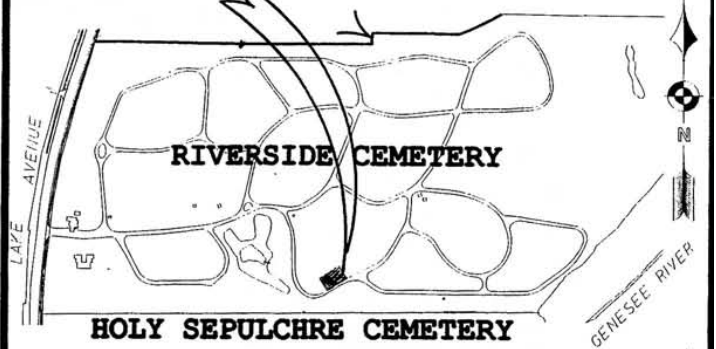


MAP SHOWING SECTION E - 8 RIVERSIDE CEMETERY

SITUATED
IN THE CITY OF ROCHESTER
STATE OF NEW YORK, COUNTY OF MONROE

DRAWN BY: James Q. Truthart
Maps and Survy, City of Rochester
Date: March 29, 2005
(NOT TO SCALE)

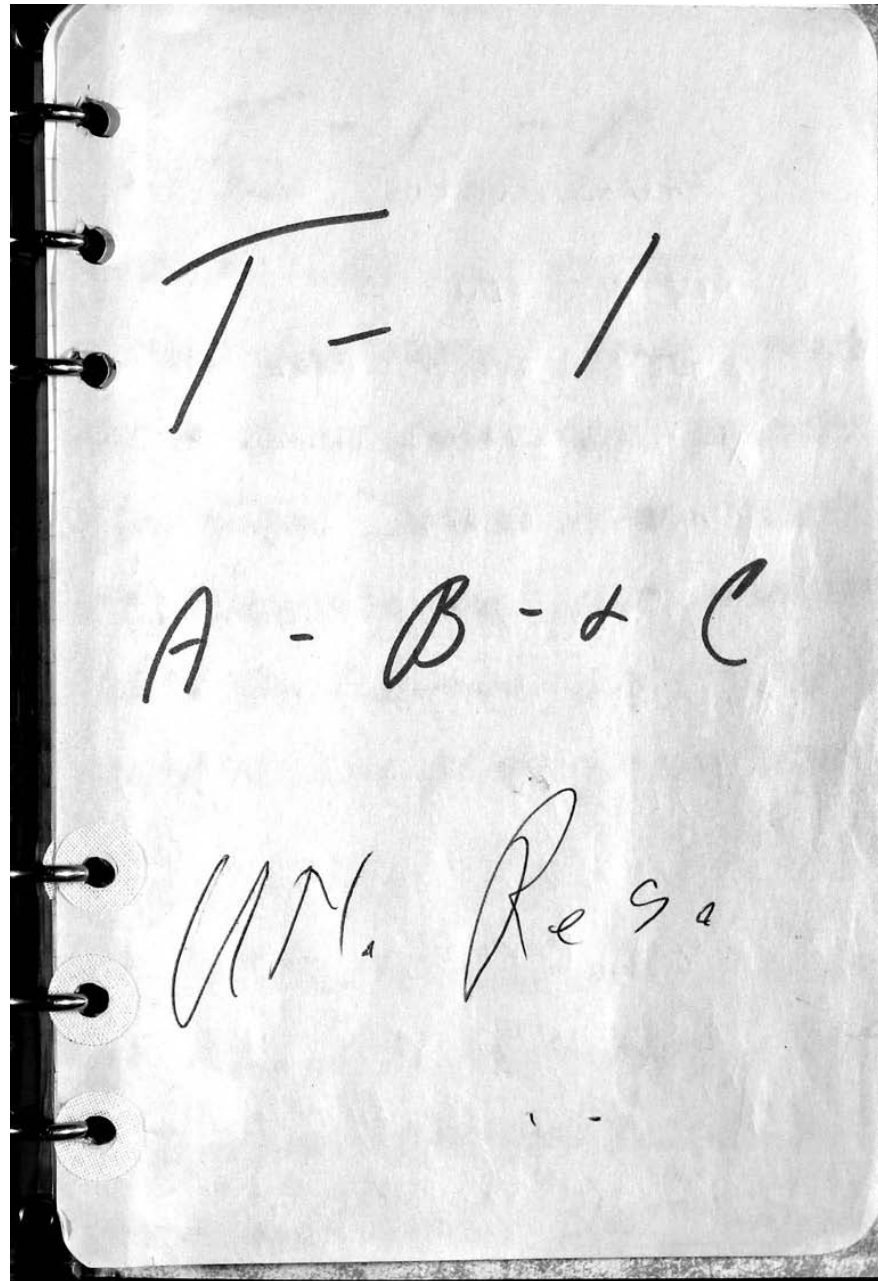
SECTION E - 8



NOTES:

THIS MAP WAS MADE FROM A
MAP OF SECTION E-8 CREATED
April 28, 1999.

THIS MAP WAS CREATED FOR
VISUAL REPRESENTATION OF
CEMETERY SECTIONS ONLY
AND SHOULD NOT BE USED FOR
ANY OTHER PURPOSE.



T-1-A

100 A - TREE

101-A-John HARRIS gm 9-18-89

102-A-Edward BALLAGIER 9-21-89

103-A-Inell JOHNSON GM 9-23-89

104-A-Howard SEVERNS chest 9-26-89

105-A-David BONAM GM 9-28-89

106-A-Williemack BROWN GM 9-30-89
New Row

100-A- Ashes Only

201-A-JAMES THOMAS gm 10-10-89

202-A-Tanya EVANS CHEST 10-12-89

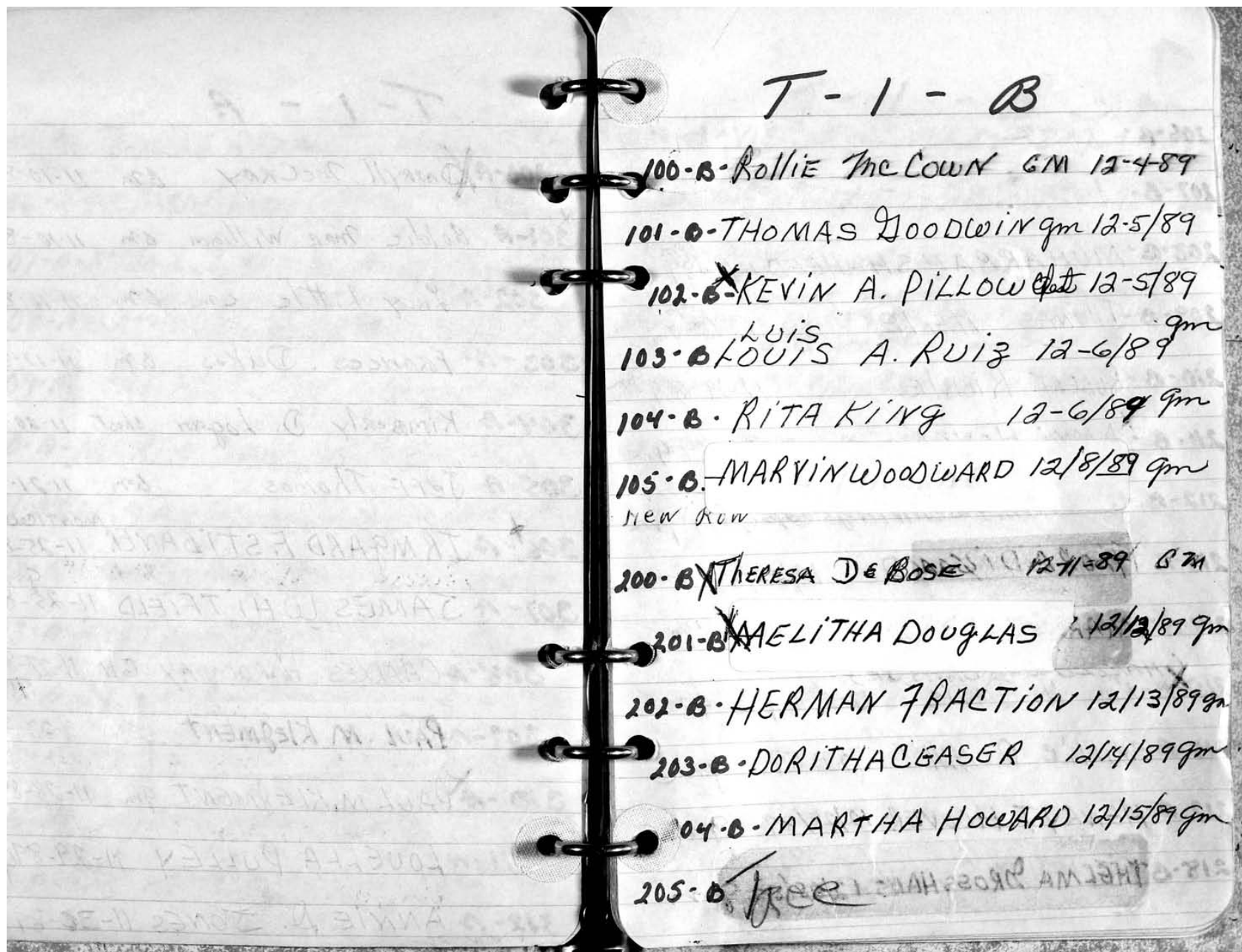
203-A-LINDA LEE HYMES Erie Chest 10-13-89

204-A-ERNEST GEORGIE CHEST 10-19-89

205-A CHARLES BRYANT chest 10-20-89²⁰
 206-A^X RICHARD BRADY gm 10-20-89^{gm}
 207-A^X AITHA L. JOHNSON ROYAL 10-23-89
 ASHES ISABELLA RICHARDSON 1-5-96 crematory
 208-A^X KATHERINE TRUEX chest 10/25/89^{chest}
 209-A^X MARY MC CLAIN 10/25/89 gm
 210-A MARIA CUP 10-26/89^{cm}
 211-A^X VIVIAN (HOWARD) WILSON gm 10/26/89^{gm}
 212-A CARL SMITH gm 10-28-89
 213-A MATTHEW JACKSON chest 10-30-89^{chest}
 214-A LEROY DAVIS gm 11-4-89^{gm}
 215-A^X MARY USSERY cm 11-7-89^{gm}
 216-A^X ELIZABETH DAUGHERTY 11-8-89^{gm}
 COX
 217-A FREDERICK L. GALLOWAY 11-7-89^{gm}
 NEW ROW

T-1 - A

300-A^X DARRYL McCRAY gm 11-10-89
 301-A Goldie Mae Williams gm 11-10-89
 302-A Lucy Little cm. gm 11-16-89
 303-A Frances Dukes gm 11-17-89
 304-A Kimberly D. Logan chest 11-20-89
 305-A Jeff Thomas gm 11-21-89
 306-A^X IRMGARD F. STIBANER 11-25-89^{monticello}
 307-A JAMES WHITFIELD 11-25-89^{gm}
 308-A CHARLES HARDWAY gm 11-27-89^{gm}
 309-A SIDNEY DAVIS Jr. gm 11-28-89
 310-A^X PAUL M. KLEMENT gm 11-28-89
 311-A LOUETTA PULLEY 11-29-89 gm
 312-A ANNIE D. JONES 11-30-89 gm
 NEW ROW



206-B Tree	T-1-B gm X 219-B VICTOR ALVAREZ 7-7-3-86,
207-B Tree	220-B ESTELLE SPENCER 1-3-90 gm
208-B MUHARBAH SHAHEED 12/16/89 gm	X 221-B IDELLA ROSS 1-6-90 -gm
209-B THOMAS HERIE 12-18-89 gm	X 222-B { ROBERT HARMON ASHES 1-30-13 THELMA HARMON 1-6-90 - WILLIE HARMON ASHES 5-30-08 gm
210-B ROBERT RIBBLE 12-19-89 gm	223-B CHRISTINE BROWN 1-8-90 gm
211-B * ANNI HOYER 12/20/89 gm	224-B Gladys HERMANN 1-8-90 6th ASHES CARL HERMANN 1-11-95
212-B JOLINDA JENNINGS 12/20/89 gm	225-B X JUNE CICERO 1-10-90 chest
213-B * MARION FLOYD 12/22/89 gm	226-B X MYRON SCHAWIAK 1-11-90 gm
214-B MAE FLORADIA 12/22/89 gm	227-B X WILLIE GREER 1-12-90 chest
215-B (HAROLD WM. DAVIS, JR.) WM H. DAVIS 12-23-89 gm	X 228-B FLORENCE STATION 1-16-90 gm
216-B WILLIE R Hill 12-23-89 gm	X 229-B ELSA E. KRAUSS 1-18-90 m. table
217-B HENRY T. HOOVER 12/28/89 gm	30-B BRENT GREEN 1-22-90 gm
218-B ALBERT WILLIAM 12/29/89 gm	231-B JESS WILLIAMS 1-22-90 gm

232-B LEO SIMMONS 1-25-90 gm	T-1-B 311-B BERNARDO DARCIA 2/21/90 ^{Connecticut} gm
233-B JOHN MAY GATES 1-26-90 gm New Row	312-B X TODD SMITH 2-22/90 Erie
300-B MARY O'NEAL 1-26-90 gm	X 313-B DELORES HILL 2-23-90 chest
301-B JONATHAN PORTER 2-5-90 gm	314-B SAMUEL ROSADO 2-23-90 Erie
302-B X DAMON REED 2-5-90 gm ESTELA REED 10-7-09 ASHS	315-B LEONA NEWTON 2-27-90 chest
303-B X CHARLES EVANS 2-6-90 gm	316-B X MARY PERRY 2-27-90 Erie
304-B X RONALD C. WINEBRENNER 2-7-90 gm	317-B LEON SMITH JR. 3-1-90 Erie
305-B ELIZABETH B. PAYNE 2-7-90 gm	318-B RUTHIE L. STOKES 3-1-90 Erie
306-B ALBERT SMITH 2-13-90 gm	319-B CLETIS HOGUE 3-3-90 ERIE
307-B ALPHONSE ORLOWSKI gm 2-14-90	320-B CECELIA MCGAW 3-3-90 MONROE
308-B WILLIS H. GALLOWAY ^(ERIE) 2-15-90	321-B ELI WHITE 3-5-90 chest gm
309-B WILLIE BARNES 2/15/90 ORLEAN	322-B STANLEY R. GOLSKI 3-7-90 Erie (GALSKI)
310-B ADELE RUSSELL 2/20/90 gm	323-B WILLIE MAE WILLIAMS 3-8-90 chest

X
324-B DONALD HOLBERTON^{ORLEAN} 3-8-90
New Row

T-1-C

100-C-EDWARD T. HARMON^{Chest} 3-9-90

X 101-C MARY VOECKS 3-9-90 chest

X 102-C-MARIE HUFF 3-12-90 Erie

103-C-EDGAR FULLER 3-12-90 Erie

104-C X DARRYL M. STEVEN^{MONROE} 3-13-90

105-C-FRANK K'ASH^{Erie} 3-14-90

106-C X CAROL DARWOOD^{ORLEAN} 3-14-90

107-C-RALPH E. CARTER 3-15-90 Chest
New Row

200-C-EARVIE MAESMITH^{Erie} 3-16-90

201-C-JOSEPH SCOTT 3-17-90 Chest

202-C X CARL JONES 3-19-90 Erie

203-C X ARETHA WHITMORE 3-19-90 Erie

204-C - LILLIE MAE HIGGINS 3-20-90 Erie
205-C - ROBERT C. ZUHLKE 3-21-90 ^{Adrian}
206-C - EDDIE TLEMB 3-21-90 Erie
207-C - CHARLES BELL 3-22-90 Chest
208-C - MYRTLE DANGLE 3-24-90 Chest
* 209-C - LUELLA ANTHONY 3-27-90 Erie
210-C - CHRISTINA WILSON 3-30-90 Erie
211-C - CATHERINE DOWDELL 4-6-90 Erie
212-C - WILLIE HALL JR 4-6-90 Erie
New Row
300-C - *ANNIE WATSON 4-7-90 ^{Paradise}
301-C - EDWARD MILTON SR. 4-9-90 ERIE
* 302-C - ROBERT J. FLOYD 4-9-90 ROYAL

T-1-C

303-X-⁴⁻¹⁰⁻⁹⁰FRANCES JOHNSON Chest
304-C-X-ROBERT L. HALL ⁴⁻¹¹⁻⁹⁰ Chest
305-C-NANON SIKHIN BOYD ⁴⁻¹²⁻⁹⁰ Erie
306-C-EULICE YOUNG ⁴⁻¹²⁻⁹⁰ Chest
307-C-JAMES CONNORS ⁴⁻¹⁸⁻⁹⁰ Erie
308-C-X^(REV.)BETTY LOUISE COLEMAN ⁴⁻¹⁸⁻⁹⁰ Erie
309-C-CRAIG BROWN ⁴⁻¹⁹⁻⁹⁰ Erie
310-C-JAMES DARDNER ⁴⁻¹⁹⁻⁹⁰ Erie
311-C-CHARITY TUCKER ⁴⁻²⁰⁻⁹⁰ Erie
New Row
400-C-ROBERT KILBURN ⁴⁻²⁰⁻⁹⁰ Erie
401-C-X^{ELLEN}MARY ELLIS ⁴⁻²¹⁻⁹⁰ Erie
YVONNE S.L. ELLIS ¹¹⁻¹³⁻⁹⁸ THES
402-C-X-MONSERRATE RUIZ ⁴⁻²¹⁻⁹⁰ Erie

T-1-C

403-C^X LOUISE HENRY 4-24-90 ERIE

404-C JOHN E. RICHARD 4-25-90 Erie

405-C JAMES BAKER 4-26-90 Erie

406-C MOZELLER JACKSON 4-27-90 Chest

407-C ALICE JONES 4-27-90 Chest

E-8

100 - XDORA M. LAMPMAN ^{CHEST} 4/30/90

101 ~~X~~ ANTOINE OVERTON YOUTH VAULT 5-1-90

102 - JULIAN JONES 5/3/90 WILBERT
SYLVIA JONES 10/6/97 FISHES

103 - JESSIE JACKSON 5/5/90 Erie

104 ~~X~~ JANICE ARMSTRONG 5-8-90 Erie

105 ~~X~~ ROBERT THACKSTON 5-9-90 Erie

106 - LARRY CARTER 5-12-90 Erie

New Row

200 BETTY BRINSON 5-12-90 Erie

201 ~~X~~ NOKOI RUDVI 5/14/90 Erie

202 ~~X~~ VIVIAN BITETTI 5/15/90 Erie

203 T. J. MORGAN 5/16/90 Erie

204 Willie Joe ^(Simpson) Cumming 5-19-90 Erie

205 *JOHN POSEY (20RD) 5-14-90 Erie
 206 JOSEPH INGLOVETT 5-18-90 Erie
 207 *CHARLOTTE B. CLAYBAUGH 5-21-90 Erie
 208 *FREDERICK J. PARKER 5-23-90 Erie
 209 ROBERT B. McCOWN JR. 5-25-90 Erie
 210 CATHERINE CREEK 5-29-90 Chest
 211 *BARBARA DOBBINS 5-30-90 Erie
 212 *BEULAH BESS 11/2/90 ERIE
 213 *LEANDRO JONES 6-2-90 Erie
 214 *MATTHIAS EGERWUNE 6-2-90 Erie
 215 FRANCES COLLINS 6-6-90 ORLEANS
 216 WILLIAM HOWARD 6-15-90 Erie
 217 RICHARD BROWN 6-15-90 Erie

E-8
 218 *ANNA RODRIGUEZ 6-16-90 Erie
 219 *JOHN SEKULSKI 6-19-90 Erie
 220 DENNIS CHAPMAN 6-21-90 Erie
 221 *AARON JONES JR. 6-21-90 Erie
 New Row
 300 *JAMES O. FLEMING 6-23-90 Erie
 301 *BARBARA GESSIN (6-25-90) 6-23-90 ERIE
 302 *BETTY J. VERSLUIS 6-26-90 ERIE
 303 *DANIEL PHILLIPS 6-26-90 Constructed
 304 *DAISY RHODES 6-29-90 Chest Erie
 305 *ROBERT HAHNENBERGER 7/3/90 CHEST
 306 WILLIAM HOLLEY 7/11/90 CHEST
 307 RAYMOND LENEHAN 7/12/90 ORLEANS

308 - ROBERT DRAKE 7/13/90	New Row 400 - LENARD ROBINSON 8-13-90 ERIE
309 - X SHERI CARTER 7/13/90	401 - ANNE MARIE ELLSWORTH 8/14/90 ^{ERIE}
310 - X OTIS WARE 7/18/90 CHEST	402 - X DAVID P. BRADY 8-16-90
311 - WILLIAM J. FULLER 7/19/90	403 - MAGGIE JEAN SPIRLES 8-16-90 ^{ERIE}
312 - X ROBERT LEE WALLS 7/19/90 GM. MONROE	404 - X SYDNEY HUTCHISON SIM 8-17-90 ^{ERIE}
313 - WILLIE LEE MITCHELL 7/21/90 ERIE	405 - BESSIE POCHER 8-17-90 ERIE
314 - LUCIUS HENRY 7-25-90 ERIE	406 - ARLANDO GILL AM 8-18-90 GM
315 - JAMES BRANTLEY 7/27/90 ERIE	407 - X ROSETTA HANAH 8-21-90 ERIE
316 - ASLEAN THOMAS ERIE 7-31-90	408 - MARJORIE W. SWIFT 8-21-90 ERIE
317 - RAYMOND P. DOIRON 8/1/90 ERIE	409 - MARY COLES 8/28/90 ERIE
318 - X JOEL CHARLES DEHLS 8/6/90 ERIE	410 - ELSIE WYNNE 8/29/90 ERIE
319 - X WALTER A. COSTA 8/6/90 ORLEANS CHEST	411 - ALBERT WEHNER 8/30/90 CHEST
320 - X EULA LAMBERT 8/11/90 MONTICELLO	

E-8

412 - WILLIE MAE TAYLOR 8/31/90 CHEST

413 - SAMUEL VALE 9/4/90 CHEST

414 X HECTOR BURGOS 9/6/90 ERIE

415 X ELIZABETH LEWIS 9/6/90 ERIE

416 - WILLIE LITTLE 9/7/90 CHEST

417 - ABRAHAM NELSON JR. 9/14/90 ERIE

418 X WILLIAM W. ROBERSON 9/19/90 MONTICELLO

419 - ADELINDA LOPEZ 9/22/90 CHEST

420 - STELLA RUSSELL 9/26/90 CHEST

500 MARY SMITH 9/27/90 ERIE

501 X JACOB KOEHLER 9/28/90 CHEST

502 X OVELIA JINGLES 9/28/90 CONTINENTAL

503 JAMES JOHNSON 9/28/90 CHEST

504 SARAH WILLIAMS 9/29/90 ERIE

505 RUTH HUFF 10/1/90 ROYAL

506 X ANGELA MARIE HOPPE 10/4/90
GM MONROE PRECAST

507 X WALTER POWELL, JR. 10/5/90
CHEST

508 MICHAEL DIAZ 10/9/90
ERIE

509 X ORA BELLE BLACK 10/11/90
MONROE

510 JOSE MARTINEZ 10/12/90
ERIE

511 WALTER GAWLOWSKI 10/12/90
ERIE

512 ULYSES HANNAH 10/12/90
ERIE

513 X MATTIE L. TURMAN 10/13/90
ROYAL

514 JULIA RAMBERT 10/18/90
ERIE

515 JOSEPH MONAHAN 10/18/90
ORLEANS

516 X DALE AULD 10/19/90
ERIE

517 RAYMOND KUCEWICZ 10/22/90 ERIE	E-8 702 JOHNNIE B. HERRING 11/2/90
518 X ALEXANDER E. SCHULICK 10/23/90 CHEST	703 X JEAN HILL 11/2/90 MONTICELLO
519 X BESSIE A. BONAZZA 10/23/90 NEW ROW CHEST	704 X VICTOR LUIS PERALTA 11-5-90 CHEST
600 - SILAS W. NOAKES 10/24/90 ERIE	705 HELEN WARREN 11-5-90 CHEST
601 - ALONZO HARMON 10/24/90 ALONZO HARMON III 10-5-98 LUN VAULT ERIE	706 - HOMER WILLIAMS SR 11-5-90 ERIE
602 - HERMAN DILLSWORTH 10/25/90 CHEST	New Row
603 X LENA MAY BAILEY 10/26/90 CHEST	800 X DONNA GARFIELD 11/6/90 ERIE
604 - DONALD WARNEY 10/26/90 WILBERT	801 X MINNIE GIBSON 11/13/90 CHEST
605 X CARL E. BURCH III 10/29/90 ERIE	802 X SARAH TRAMEL 11/13/90 CHEST ARTHUR TRAMEL 8-5-90 ASHES
606 - THOMAS BELL 10/29/90 CHEST	803 X JERRY LATIMER 11-15-90 ERIE
New Row	804 X GLENDA LEWIN 11-16-90 CHEST
700 HOWARD C. MEDLEY 11/2/90 CHEST	805 X HOWARD TERRY, SR. 11-23-90 MONTICELLO
701 MICHAEL DAVID HENRY 11/2/90 CHEST	806 JOE PRESTON HOOKER 11-23-90 ERIE CHEST

807-X WILLIE JOE CRITTENDEN 11-24-90 GM CHEST	E-8 905 DOREATHA CRANE 12-19-90 ERIE
808-X JOSEPH R. SANDERS 11-24-90 MONTICELLO	906- ELIZABETH MONTONDO 12-20-90 WILBERT
809- ANTHONY WASHINGTON 11-26-90 ERIE	907-X ANDREW TOTH 12-21-90 FARRELL- RYAN
810-X JASON HILL 11-29-90 CHEST	908- MAGNOLIA W. FLOYD 12-21-90 CHEST
811-X DOROTHY BROCK 12-1-90 CHEST	909- KEITH KEETON 8/9/03 MONARCH
812-X KEVIN NELSON 12-3-90 CHEST	910- DAVID THOMAS 8-7-03 ERIE
813-X ROSA LEE BOLLER 12-5-90 New Row CHEST	911-X BEN JOHNSON 8-1-03 ERIE
900-X TERRENCE P. BURNS 12-6-90 CHEST	912- HORACE MCHENRY, J.R. 12/28/90 CHEST
901- CLEMENTINE WELBORN 12-6-90 CHEST	913-X HELENE BAILEY 1/2/91 GM PRECAST CHEST
902-X MARIE S. GREEN 12-12-90 ERIE	
903- WILLIE LITTLES 12-14-90 ERIE	
904-X ANNA DRATSCH 12-15-90	