

March 20, 1910



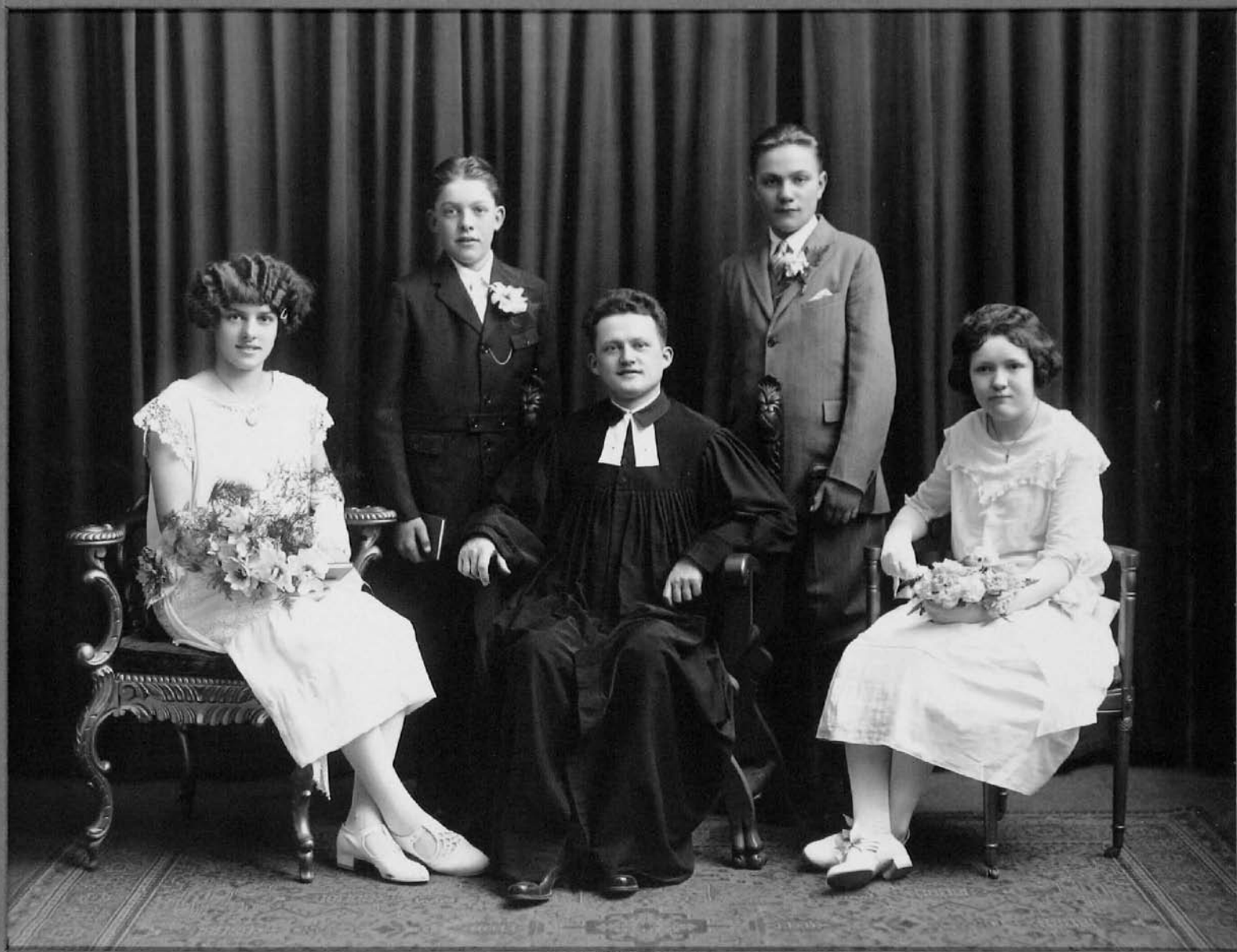
1910
L-to-R
Carl J.M. Dinse Bertha A. Benwitz
Harry A. Goodberlet Martha A. David
Otto G.E. Gunther Edith A.C. Dell
Carl G. Koenig Frieda I. Hass
Arthur A.H. Schuth Lena Koenig
Clarence F. Studemann Lily Minnie Schultz
* Rev. O.C. Kreinheder





1919

1919	
L-to-R	
Frederick C. Dell	Mary Gawens
*Rev. John Rabold	Tilda K. Goodberlet
Raymond C. Guinegaw	Ina Emma Smith
	Mildred E. Bauchle
	Elsie M.R. Goodberlet



1925

Second from right Clarence Gruschow

1925

L-to-R
Ethel E. Gruschow
Clarence H. Gruschow
Oswald M. Muhs
Elizabeth C. Weber
*Rev. Walter Labrenz



L-to-R 1927
 Albert C. Gruschow
 Robert F. Gruschow
 Marion Russel Wadt
 *Rev. Walter Labrenz
 Elenore J. Muhs
 Loretta A. Dell
 Edna A. Pehta



1929

L-to-R
Frederick E. Ruhe
John E. Kuhls

1929

Marion Ruhe
Lillian Schoultz
*Rev. R. Huebsch
Mildred Dell
Ruth M. Dell

*Lower Far right
Ruth Weston*



Ralph Dell	1931	L-to-R
Robert Dell		Marie H. Schoultz
Harold Gruschow		Florence W. Dell
Carl Gruschow		Elizabeth A. Muhs
Edward W. Kuhls		*Rev. R.W. Huebsch
Henry C. Muhs		Lillian M. Fedigan
Clarence J. Schultz		Gladys A. Schoultz
Irving R. Schuth		



L-to-R 1934
Louisa C. Bricks
Lillian J. Dell
Irvin F. Dell
Evelyn R. Fedigan
Eleanor R. Dell
*Rev. R.W. Huebsch





*Charles Dreher
Gretchen Johanna Raab
Rev. H. Meyer
Doris Schultz
Neil Dreher*

1945



1945

L-to-R
Charles Dreher
Gretchen Johanna Raab
*Rev. H. Meyer
Doris Schultz
Neil Dreher

1946



1946

L-to-R
Lois Elaine Meyer
Emil M.J. Raab
Ellen J. Bushman
*Rev. R.F. Meyer

Harold Weston
Rev. Mikolon
George DeWitt

Duane Harrington
Alan Bauchle

Ed Schmittendorf
Nancy Schillinger

Norm Gruschow
Blondell

1950



1950 L-to-R
Back Row
Harold Weston
*Rev. Theo. Mikolon
George DeWitt
Third Row
Shirly Moose
Duane C. Harrington
Carolyn Pehta

1950 L-to-R
Second Row
Alan Bauchle
Don Gruschow
Ed. Schmittendorf
Front Row
Nancy Schillinger
Elmer E. Leusch Jr.
Norm Gruschow
Lenore Blondell