

St. Paul's Lutheran Church Name	Confirmation Date	Clifford Ave. and Loomis St. Adult/ Birth Single/ Date Married	Baptism Date	Rochester, NY Parents Names
Breitenreiter, Clara	April 16, 1916	S	March 26, 1901	
Creidt, Marguerite Julia	"	S	August 15, 1903	
Denk, Evelyn Eleanor Genevieve	"	S	July 21, 1902	
Ernisse, Milton	"	S	May 7, 1902	
Heiden, Carolyn Dorothy	"	S	December 20, 1902	
Henn, Elsie Anna	"	S	July 8, 1901	
Minges, Edna	"	S	March 4, 1902	
Muhs, Etta Elizabeth	"	S	August 20, 1902	
Sass, Mildred	"	S	February 26, 1902	
Schroeder, Florence	"	S	February 24, 1902	
Schwonke, Fred Jr.	"	S	January 6, 1902	
Denk, Henry	April 19, 1916	A/S		
Denk, Clarence Edward	"	"		
Ellwanger, George Jr.	"	"		
Kaiser, Charles Jr.	"	M		
Morath, Bertha	"	A/S		
Nickel, Valentine	"	"		
Breithaupt, Raymond Jr.	April 1, 1917	S	July 25, 1903	
Dreyer, Grace M.	"	S	February 12, 1903	
Duerr, Delia M.	"	S	February 29, 1904	
Effrige, Ruth M.	"	S	September 26, 1903	
Engenmann, Irving	"	S	May 21, 1903	
Frank, Florence M.	"	S	August 1, 1902	Transferred to Sodus ME. March 16, 1948
Geiss, Edwin G.	"	S	February 23, 1903	
Gutzmer, Elsie	"	S	May 24, 1903	
Hauer, Nelson A.	"	S	December 10, 1903	
Heiler, Marim	"	S	June 7, 1902	
Herr, Fred J.	"	S	November 6, 1903	
Herr, Edwin G.	"	S	April 28, 1902	
Hoppe, Ralph G	"	S	April 6, 1903	
Jehlin, Calista E.	"	S	June 27, 1904	
Keiser, Lillian M.	"	S	December 9, 1903	
Confirmation Lists 1916 thru 1922				

Page 1

St. Paul's Lutheran Church Keplin, Viola E. Name	" Confirmation Date	Clifford Ave. and Loomis St. S October 3, 1092 Adult/ Birth Single/ Date Married	Baptism Date	Rochester, NY Parents Names
Knope, Harola W.	April 1, 1917	S March 23, 1902		
Leiske, Henry F.	"	S Sept. 2, 1903		
Lyness, Arthur J.	"	S January 11, 1903		
Muhs, Evelyn N.	"	S November 30, 1903		
Robinson, Ray F.	"	S September 19, 1903		
Schultz, Armand C.	"	S January 22, 1904		
Schwonke, Norman	"	S April 30, 1904		
Staub, Ralph C.	"	S March 8, 1902		
VanStallen, Christiana	"	S August 1, 1905		
Welner, Mildred E.	"	S July 18, 1903		
Witzel, Elsie A.	"	S Nov. 16, 1902		
Zulauf, Harry w.	"	S October 18, 1902		
Yorkey, Herbert J.	April 4, 1917	A/M		
Yorkey, Mrs. Herbert J.	"	A/M		
Elias, Jacob	"	A/M		
Smith, Willa	"	A/S		
VanGruafndand, Fred	May 24, 1917	S		
Hoskam, Agnes	"	S		
Brectreiter, Arthur	"	S June 27, 1903		
Bertsche, Raymond	"	S April 27, 1904		
Elias, Florence Madeline	"	S February 20, 1906		
Miss Hazel Brasser	November 26, 1912	S October 19, 1893	November 26, 1912	Father John Brasser Mother Minnie nee Schaneburg
Denk, Frank George	March 24, 1918	S December 5, 1903		
Fox, Irene Ida	"	S October 12, 1904		
Gross, Edna May	"	S May 20, 1903		
Hoaug, Howard Carlton	"	S March 5, 1905		
Keplin, Ethel Augusta	"	S November 7, 1904		
Laney, Magdalene Laura	"	S June 7, 1904		
Confirmation Lists 1916 thru 1922				

St. Paul's Lutheran Church Name	Confirmation Date	Clifford Ave. and Loomis St. Adult/ Single/ Married	Birth Date	Baptism Date	Rochester, NY Parents Names
Mayer, Luther Willis	March 24, 1918	S	May 14, 1904		
Redder, Gertrude	"	S	May 28, 1904		
Rexer, Emil Otto	"	S	August 1, 1904		
Rexer, Herman paul	"	S	August 1, 1904		
Roller, Lillian Grace	"	S	November 12, 1904		
Sass, Norman	"	S	January 9, 1904		
Schlegel, Oliver Edward	"	S	February 29, 1904		
Spetznagel, Edward L.	"	S	June 3, 1904		
Zugelder, Muriel	"	S	November 7, 1904		
Dutton, Pual Henry	March 27, 1918	A/M		March 27, 1918	
Koeth, Edna Nellie	"	A/S			
Miller, Pearl Louise	"	A/S			
DeSmith, Ruth Hazel	"	A/S		March 27, 1918	
Gross, Howard George	April 13, 1919	S	December 16, 1904		
Gutzmer, Alfred Albert	"	S	October 26, 1905		
Kreiser, Howard John	"	S	May 14, 1905		
Breitenbach, Hazel May	"	S	November 6, 1905		
Cronk, Emma Louise	"	S	May 29, 1905		
Effrige, Margaret Florence	"	S	September 26, 1905		
Flynn, Mae Dora	"	S	May 25, 1905		
Frank, Alice Julia	"	S	January 19, 1905		
Hoppe, Mabel Laura	"	S	January 17, 1905		
Laufer, Hazel Anna	"	S	October 22, 1905		
Lyness, Corinne Violet	"	S	August 13, 1905		
McLaughlin, Edna Agnes	"	S	June 26, 1905		
Ohlson, Sigrid Maria	"	S	February 3, 1906		
Rake, Alorma Georgia	"	S	November 18, 1905		
Schroll, Elvira Melissa	"	S	April 9, 1905		
Volz, Henrietta E.	April 16, 1919	A			
Owens, Harry	"	A			
Confirmation Lists 1916 thru 1922					

St. Paul's Lutheran Church		Clifford Ave. and Loomis St.		Rochester, NY	
Name	Confirmation Date	Adult/ Single/ Married	Birth Date	Baptism Date	Parents Names
Ohlson, Greta Elizabeth	May 11, 1919	A/S	June 29, 1903		
Bond, Waldemar C.	June 8, 1919	A/S			
Dentinger, Leona G.	"	A/S			
Slover, Mrs. Clarence E.	"	A/S			
Abel, Leona Per Nell	March 28, 1920	S	January 14, 1906		
Bin, Esther Louise	"	S	July 27, 1905		
Bond, Lois Viola	"	S	December 17, 1906		
Brown, Jacob	"	S	July 22, 1907		
Burger, Grace Alice	"	S	July 21, 1905		
Doerrer, Florian William	"	S	July 7, 1907		
Dutton, Hazel May	"	S	August 27, 1906		
Epp, Dorothy Elsie	"	S	January 7, 1906		
Gribel, Irene Edna	"	S	March 8, 1906		
Gross, Edwin Ellison	"	S	June 24, 1904	March 21, 1920	
Hahn, Katherine Georgiana	"	S	April 5, 1905		
Hargarther, Adele	"	S	May 22, 1907		
Henn, Arnola Edgar	"	S	October 2, 1905		
Herr, Emma Julian	"	S	May 23, 1905		
Jehlen, Warren	"	S	March 11, 1906		
Knope, Elmer Edwin	"	S	December 1, 1906		
Kappella, Nelson John	"	S	March 27, 1906		
Laney, Dorothy Mabel	"	S	March 1, 1907		
McConnell, Gordon Charles	"	S	May 1, 1906		
Mikel, Ella May	"	S	July 9, 1907		
Muhs, Leona	March 21, 1920	S	August 6, 1906		
Muhs, Willard Arthur	"	S	May 9, 1906		
Reimer, Burton John	"	S	October 15, 1906		
Salzer, Edward Carl	"	S	May 24, 1906		
Schmanke, Franklin	"	S	August 1, 1905		
Confirmation Lists 1916 thru 1922					

St. Paul's Lutheran Church Name	Confirmation Date	Clifford Ave. and Loomis St. Adult/ Single/ Married	Birth Date	Baptism Date	Rochester, NY Parents Names
Schrank, Ruth Magdalene	March 21, 1920	S	June 7, 1906		
Schwartz, Adolph	"	S	June 17, 1906		
Slager, Caroline Nellie	"	S	September 20, 1905		
Sweemer, Herbert	"	S	June 17, 1906		
Taylor, Orley Carl	"	S	September 20, 1905		
Then, Robert	"	S	August 18, 1906		
Vasburgh, Ethel Vivian	"	S	July 17, 1905		
Wahl, Jeannette Ruth	"	S	January 13, 1907		
Weiss, Grace Theresa	"	S	May 15, 1907		
Witzel, Adelaide Amelia	"	S	July 25, 1904		
Zulauf, Ray Carl	"	S			
Ackerman, Archibold B.	March 20, 1921	S	August 4, 1902		
Ackerman, Stephen T.	"	S	July 12, 1904		
Denk, Joseph A.	"	S	October 27, 1905		
Denk, Mildred F.	"	S	March 21, 1908		
Denk, Ruth D.	"	S	March 27, 1907		
Dummer, Edwara W.	"	S	September 25, 1906		
Elias, Evelyn E.	"	S	May 21, 1908		
Fritz, Bessie M.	"	S	May 28, 1907		
Gregory, Dorothy M.	"	S	February 10, 1908		
Hoppe, Adolph L.	"	S	October 26, 1906		
Josh, Evelyn R.	"	S	December 20, 1906		
Keiser, Charles F.	"	S	July 13, 1907		
Krembel, Clarence J.	"	S	May 14, 1907		
Madison, Leona M.	"	S	May 22, 190		
Minges, Chester W.	"	S	December 15, 1907		
Ohlson, Conrad B.	"	S	October 13, 1907		
Proch, Florence C.	"	S	February 4, 1907		
Schrall, Violet O.	"	S	April 23, 1908		
Wackerman, Geraldine M.	"	S	January 28, 190		

St. Paul's Lutheran Church Name	Confirmation Date	Clifford Ave. and Loomis St. Adult/ Single/ Married	Birth Date	Baptism Date	Rochester, NY Parents Names
Burger, Ruth E.	April 9, 1922	S	December 12, 1908		
Dobbertin, Violet	"	S	February 16, 1906		
Dobbertin, Lena G.	"	S	September 23, 1907		
Effrige, Dorothy	"	S	August 26, 1908		
Gresens, Laretta G.	"	S	December 4, 1907		
Henn, Charlotte A.	"	S	August 5, 1908		
McClusky, Hazel P.	"	S	April 28, 1908		
Pett, Gladys M.	"	S	October 4, 1908		
Rexer, Ruth Mildred	"	S	May 25, 1908		
Sass, Helen W.	"	S	March 24, 1908		
Schmanke, Florence A.	"	S	March 1, 19009		
Schmanke, Ruth L.	"	S	September 23, 1908		
Taillie, Claribel D.	"	S	March 14, 1908		
Van Almkerk, Ethel D.	"	S	May 30, 1907		
Gross, John D.	"	S	January 3, 1908		
Greinke, Raymond W.	"	S	March 23, 1908		
Gutzmer, George A.	"	S	August 9, 1908		
Hodge, Sylvester	"	S	October 1, 1907		
Keplin, Nelson C.	"	S	October 8, 1907		
Keiser, Harry G.	"	S	April 8, 1909		
Neidermier, Gordon H.	"	S	April 1, 1908		
Pirner, Theodore J.	"	S	November 14, 1907		
Shaw, Randall W.	"	S	August 20, 1907		
Sweemer, Elmer	"	S	June 8, 1908		
Thurber, Ray	"	S	May 24, 1928		
Boher, Keise M.	April 12, 1922				







"Class of 1911."





St. Paul's Church - Class of 1913



1914



1915





1917





1919



1920





1922











1927





1929



1930



1931







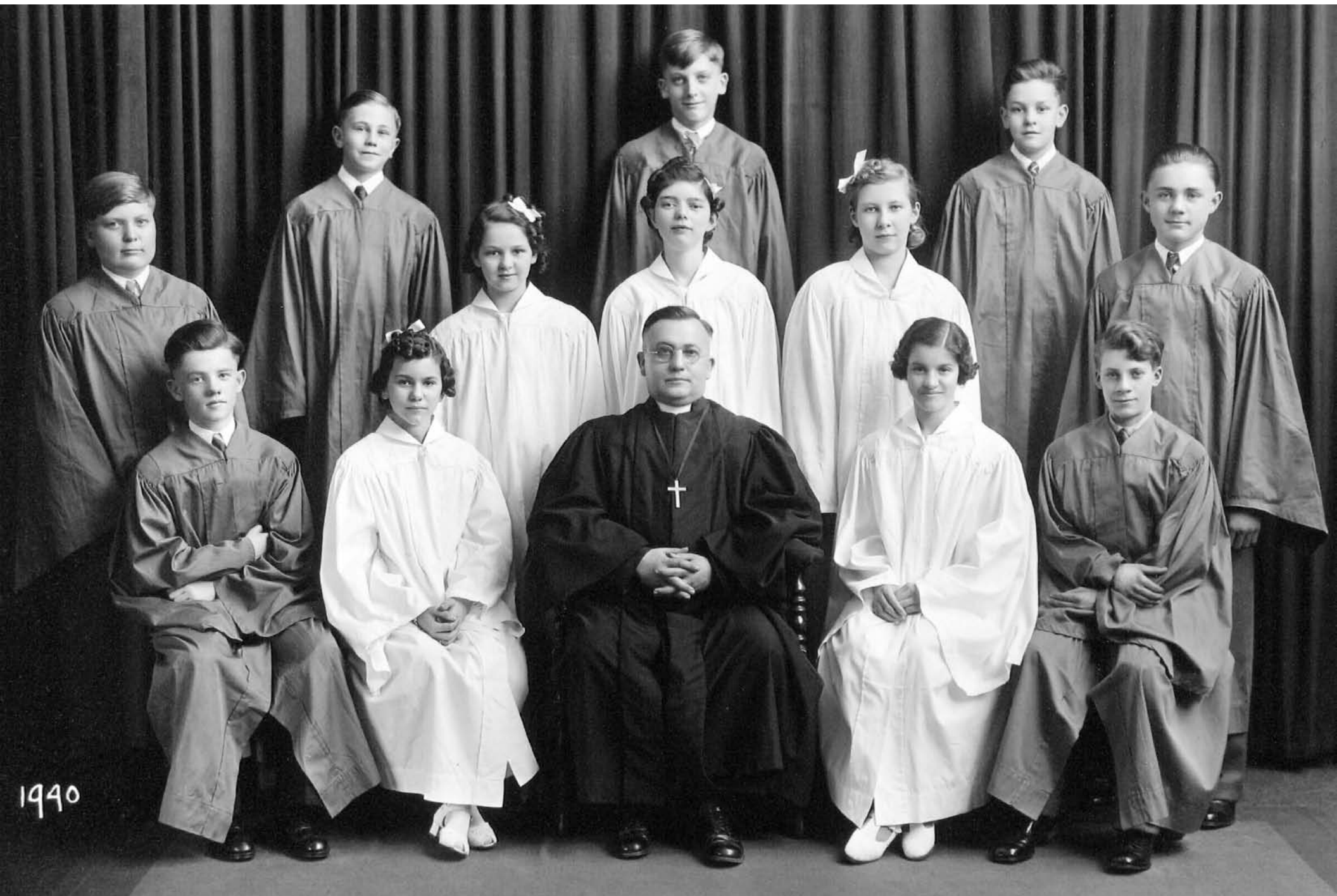
















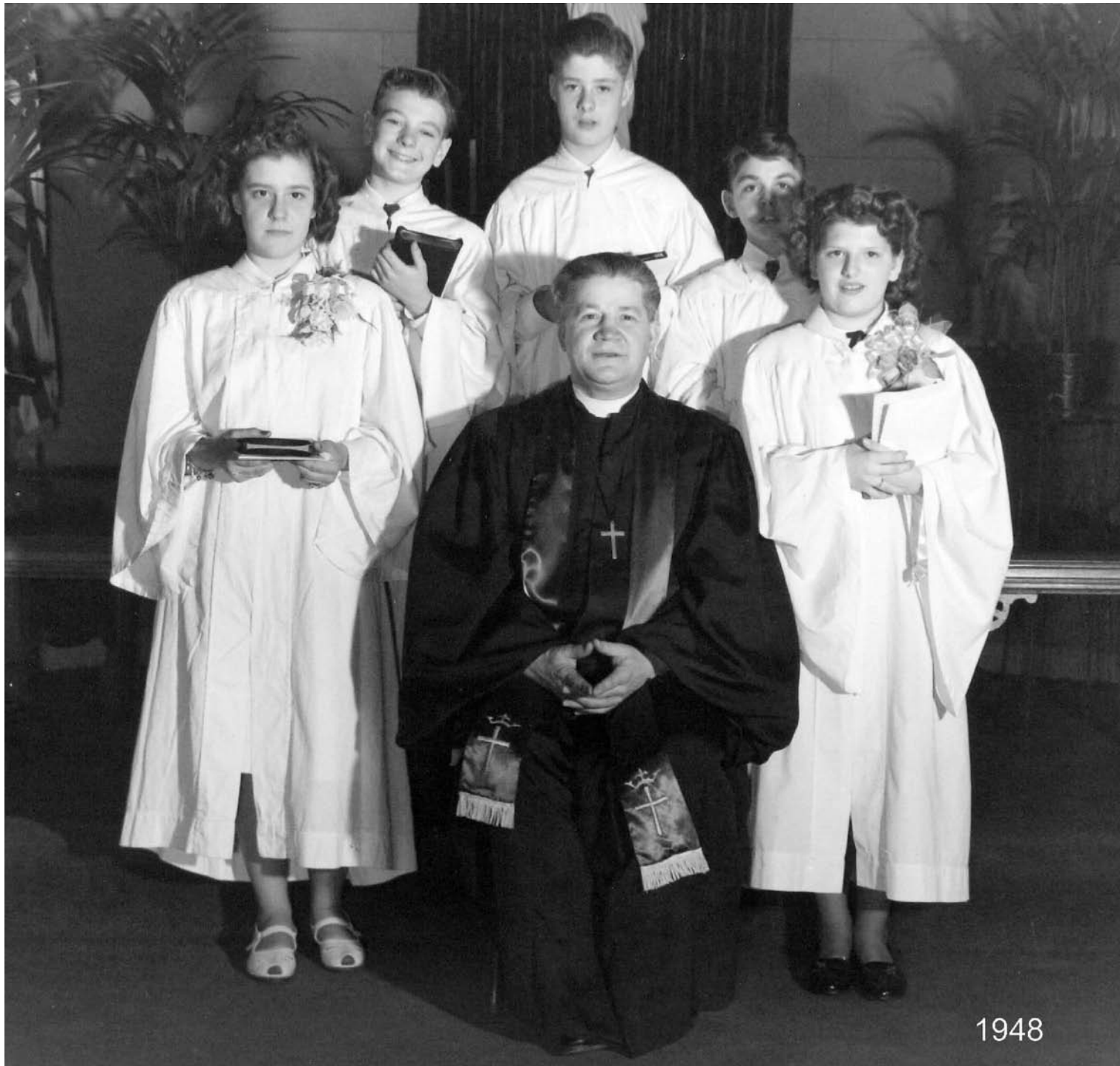












1948



